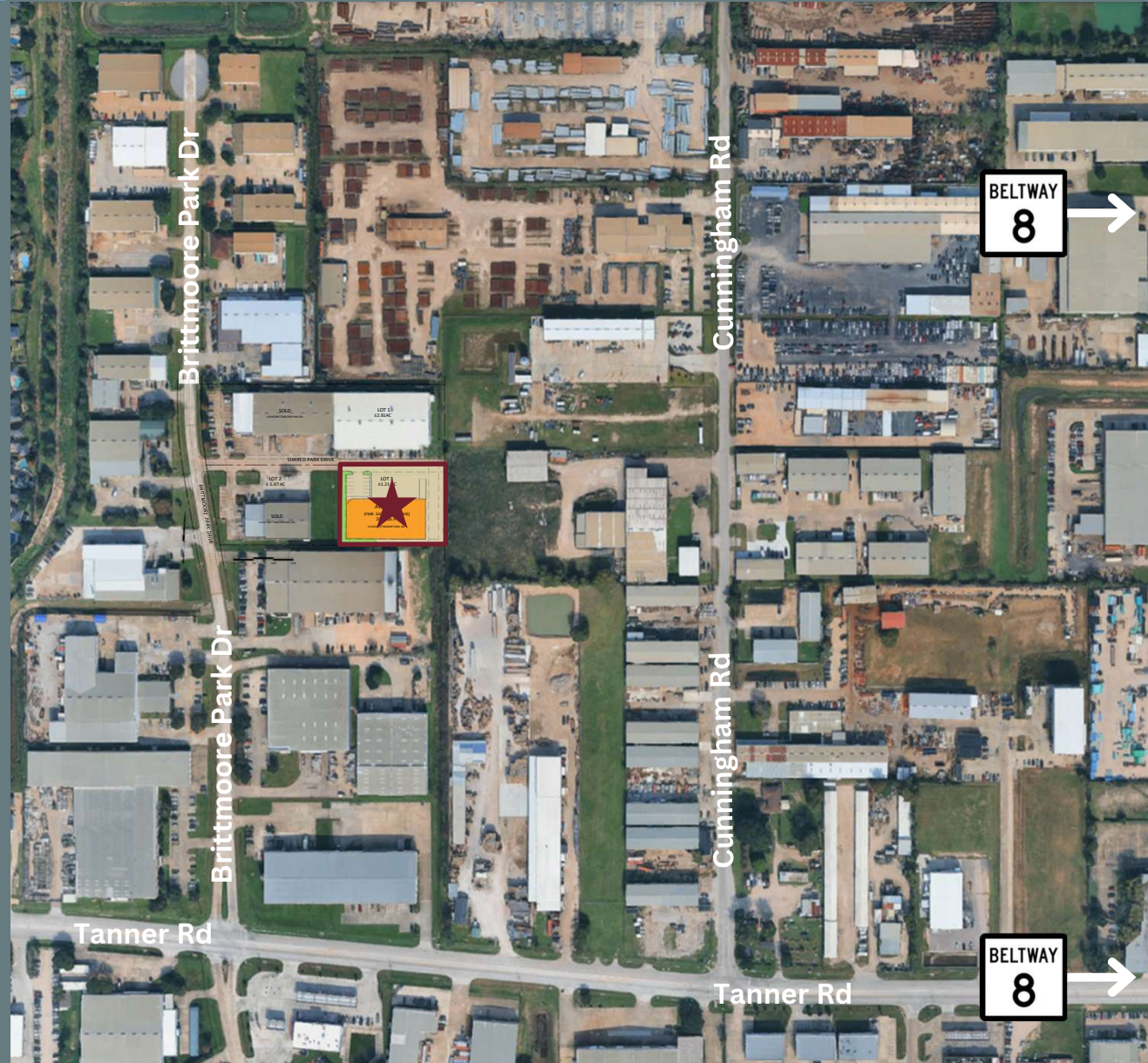
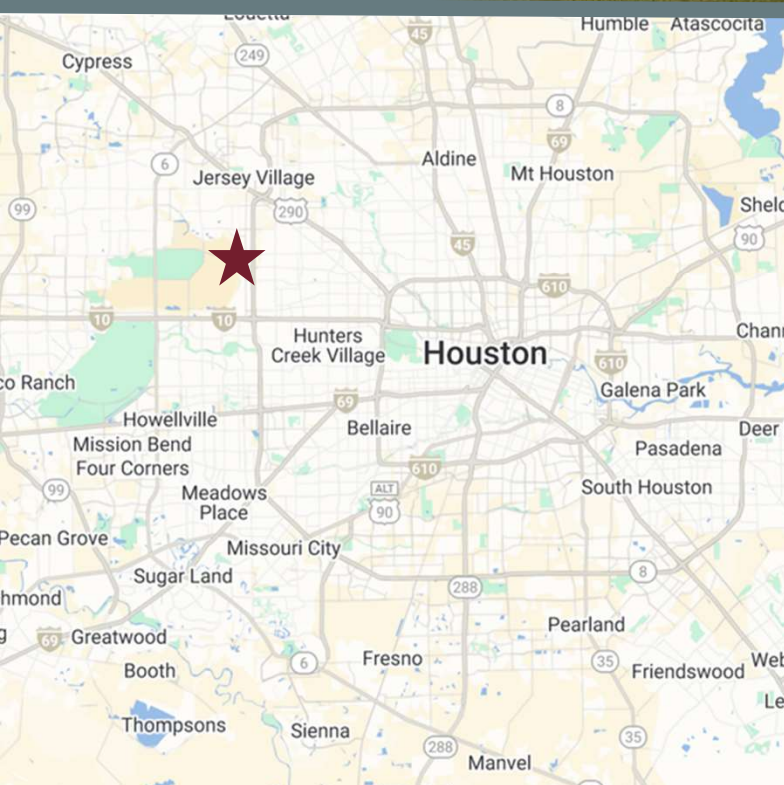


**11936 Brittmoore Park Drive**  
**Houston, Texas 77041**  
*Harris County*

20,000 SF Office and Warehouse

**FOR LEASE**

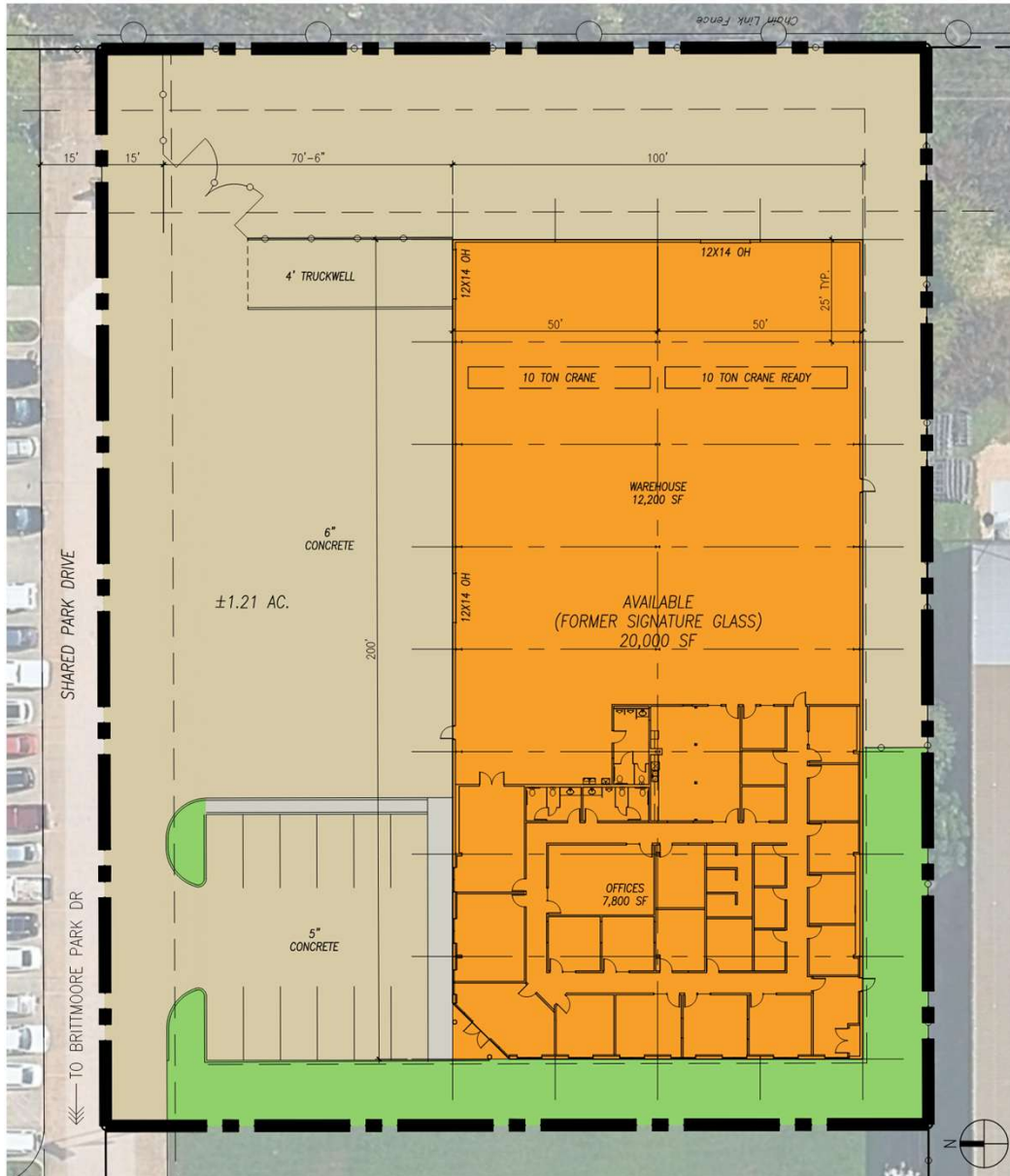


**COPELAND RHEA**  
crhea@claydevelopment.com  
(713) 789-2529

**CATHERINE CHAPMAN**  
cchapman@claydevelopment.com  
(713) 789-2529

**Brittmoore Tanner Business Park**





## Building Features

- **Total Building:** ±20,000 SF
- **Office:** 7,800 SF
- **Warehouse:** 12,200 SF
- **Total Acres:** ±1.21 Acres
- **Total Fenced Yard:** ±0.24 Acres
- **Truck Court:** 70' Depth
- **(2) 12' x 14' Grade Level Door**
- **(1) 12' x 14' Dock High Door**
- **(1) 10-Ton Crane**
- **10-Ton Crane Ready**
- **Power:** 800 amps, 480/277 volt, 3 phase, 4 wire
- **12 Car Parks**
- **24' Eave**
- **Sprinkler:** No
- **Regional Detention**