

# FOR LEASE OFFICE SPACE AVAILABLE



For further information  
please contact:

**Copeland Rhea / Charlie Christ**  
P 713.789.2529  
F 713.782.3755  
[crhea@claydevelopment.com](mailto:crhea@claydevelopment.com)

## FEATURES

- Proposed new two story Class A office building
- Up to 86,750 s.f. to be available for lease.
- Located in deed restricted Deerwood Glen Business Park, a 150 acre development along the ship channel/ Hwy 225 corridor.
- High visibility from Hwy 225 and excellent access to Beltway 8 and 13th Street.
- Generous parking, 4.5/1000 parking ratio.
- Efficient floor plate with no interior columns.

**CLAY**  
DEVELOPMENT & CONSTRUCTION INC.  
COMMERCIAL DESIGN-BUILDERS

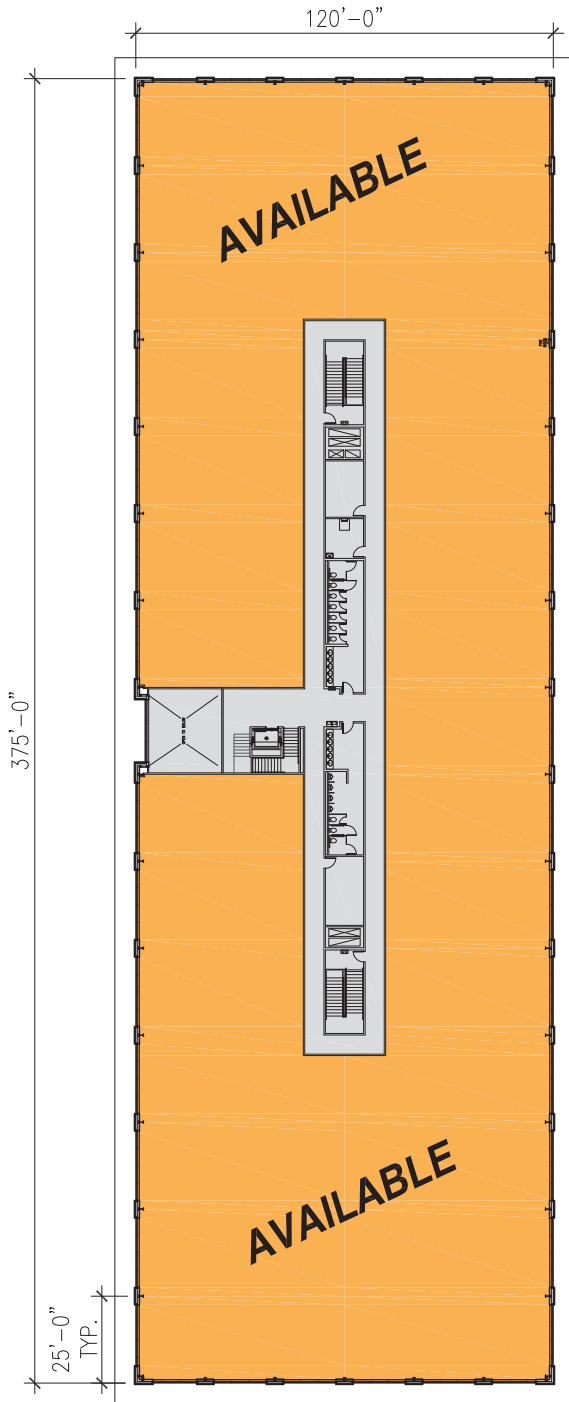


**4480 HIGHWAY 225  
DEERWOOD GLEN BUSINESS PARK**

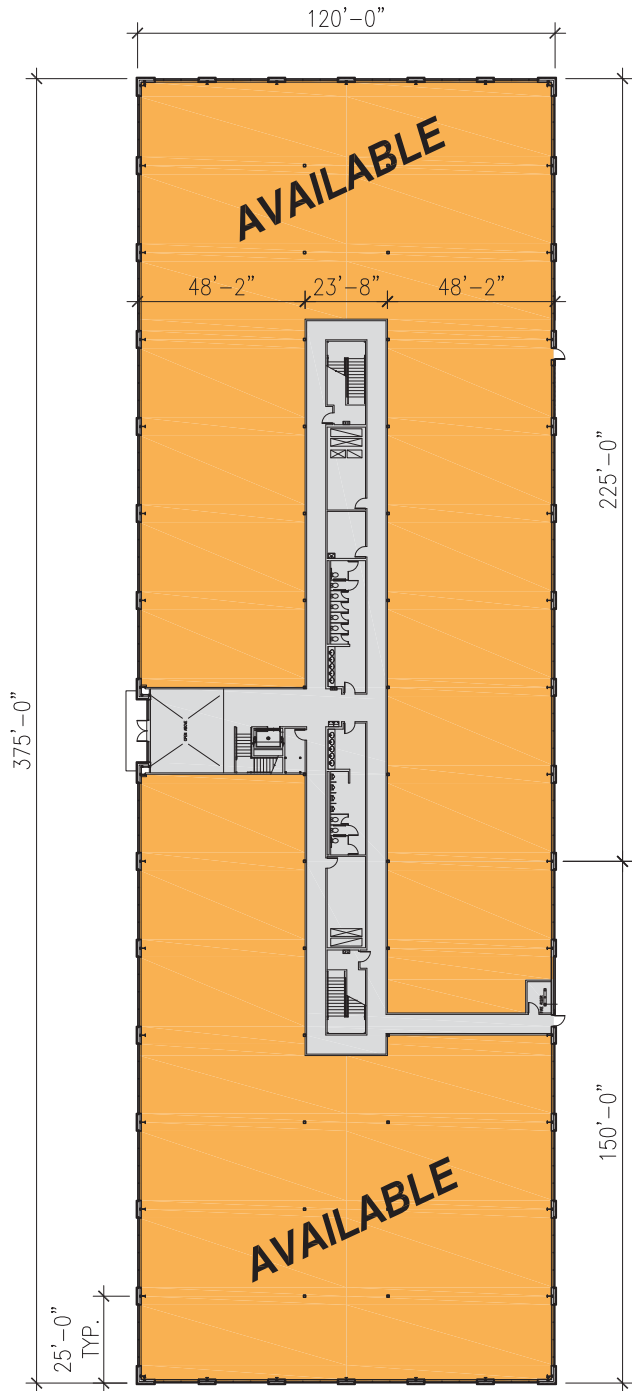


# FOR LEASE

## OFFICE SPACE AVAILABLE



**2ND FLOOR**  
**±44,357 s.f. AVAILABLE**



**1ST FLOOR**  
**±42,396 s.f. AVAILABLE**

**DEERWOOD OFFICE #4**  
**DEERWOOD GLEN BUSINESS PARK**

