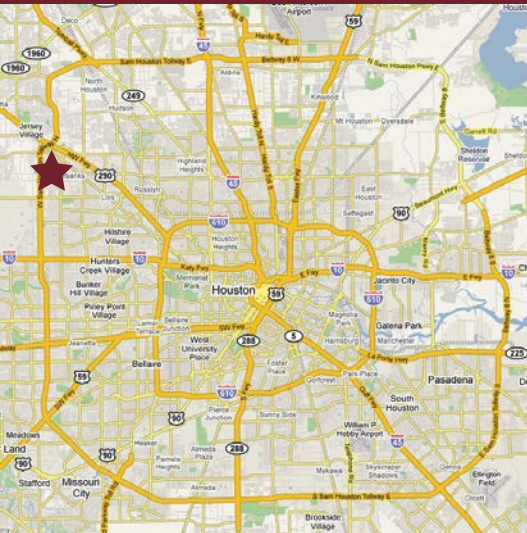


FOR LEASE OFFICE / WAREHOUSE



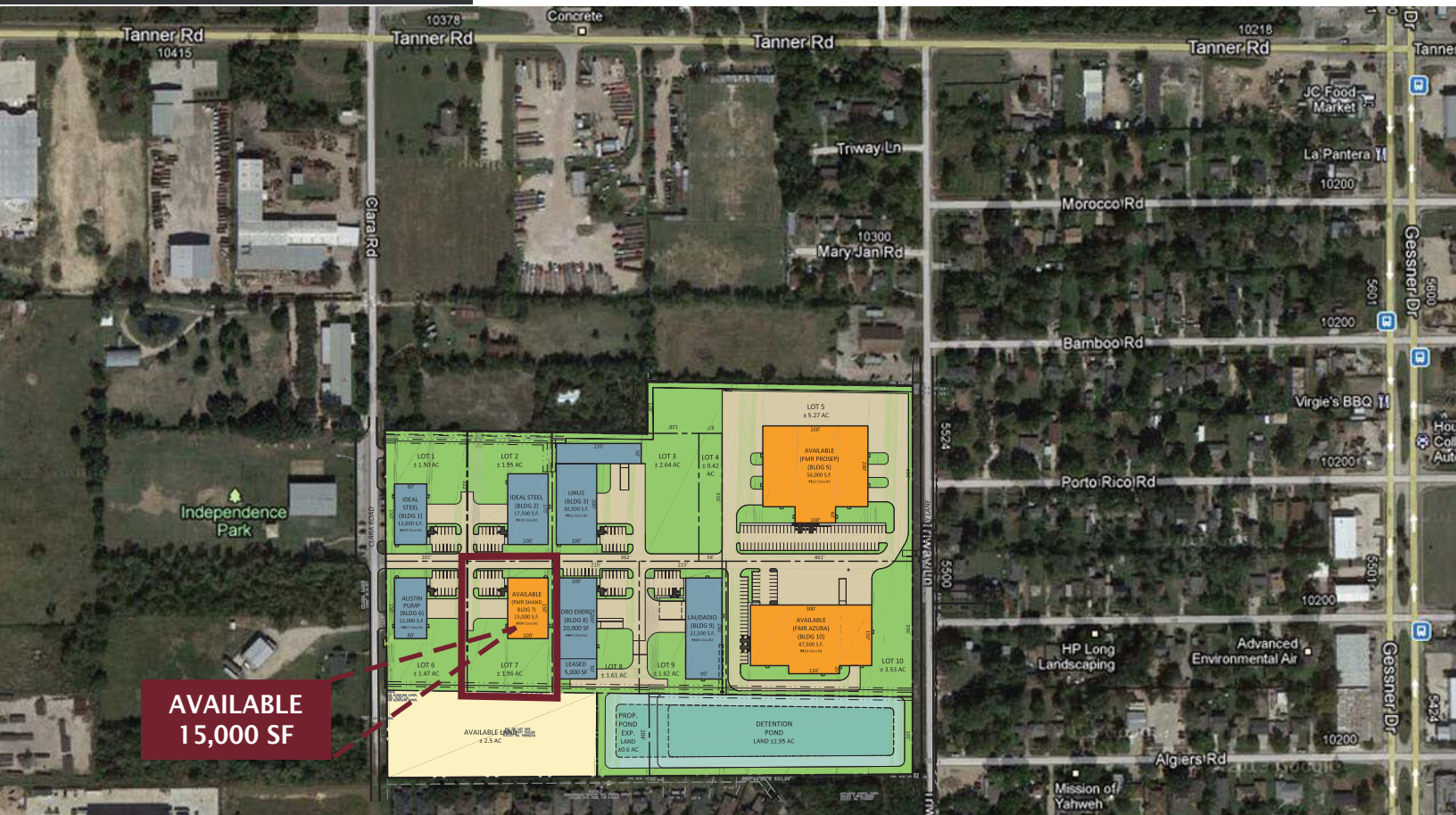
For further information
please contact:

Charlie Christ / Robert Clay
P 713.789.2529
F 713.782.3755
cchrist@claydevelopment.com

FEATURES

- 15,000 sf space including 12,900 sf warehouse and 2,100 sf office
- Located on Clara Rd just south of Tanner Rd in Northwest Houston with excellent access to Beltway 8, Hwy 290 & I-10
- 24 ft. eave height, HVAC in shop
- 2-5 ton crane existing, 10 ton crane-ready
- City of Houston utilities; outside Houston city limits

CLAY
DEVELOPMENT & CONSTRUCTION INC.
COMMERCIAL DESIGN-BUILDERS



AVAILABLE
15,000 SF

**5504 CLARA ROAD
HARRIS COUNTY, TX**



FOR LEASE

OFFICE / WAREHOUSE



OFFICES
2,100 SF

AIR CONDITIONED
WAREHOUSE
12,900 SF

5 TON CRANE

5 TON CRANE

5504 CLARA ROAD
HARRIS COUNTY, TX

