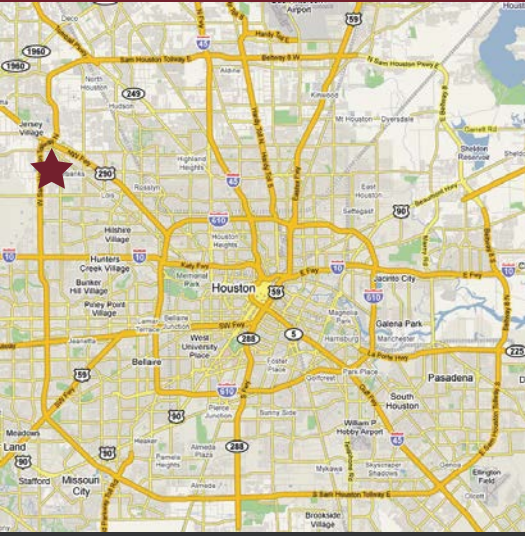


FOR LEASE OFFICE / WAREHOUSE



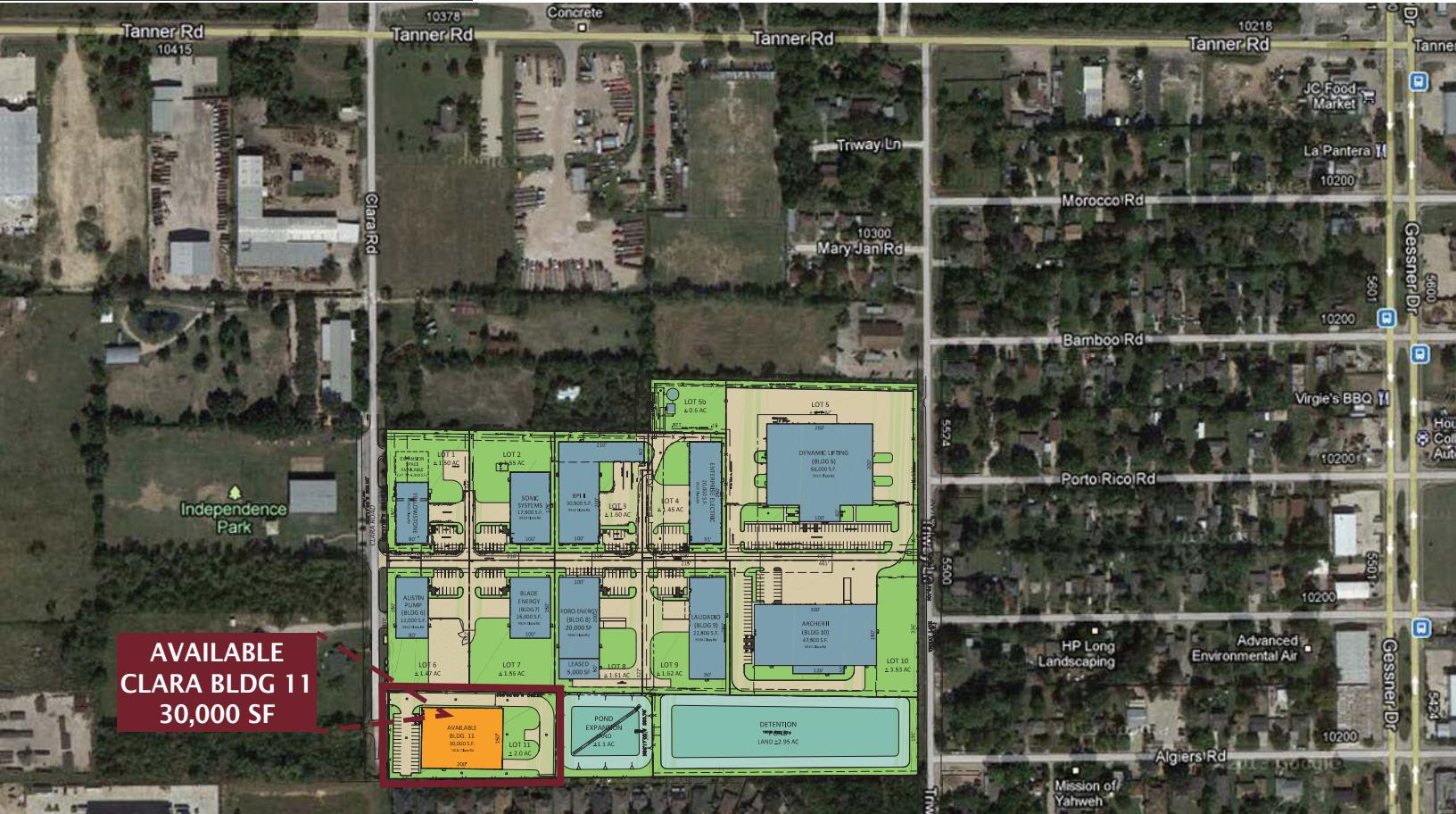
Not actual building

For further information
please contact:

Copeland Rhea / Charlie Christ
P 713.789.2529
F 713.782.3755
crhea@claydevelopment.com

FEATURES

- 30,000 sf dock high/grade level warehouse building
- Located on Clara Rd just south of Tanner Rd in Northwest Houston with excellent access to Beltway 8, Hwy 290 & I-10
- 29 ft. eave height
- 20 ton crane-ready
- City of Houston utilities; outside Houston city limits

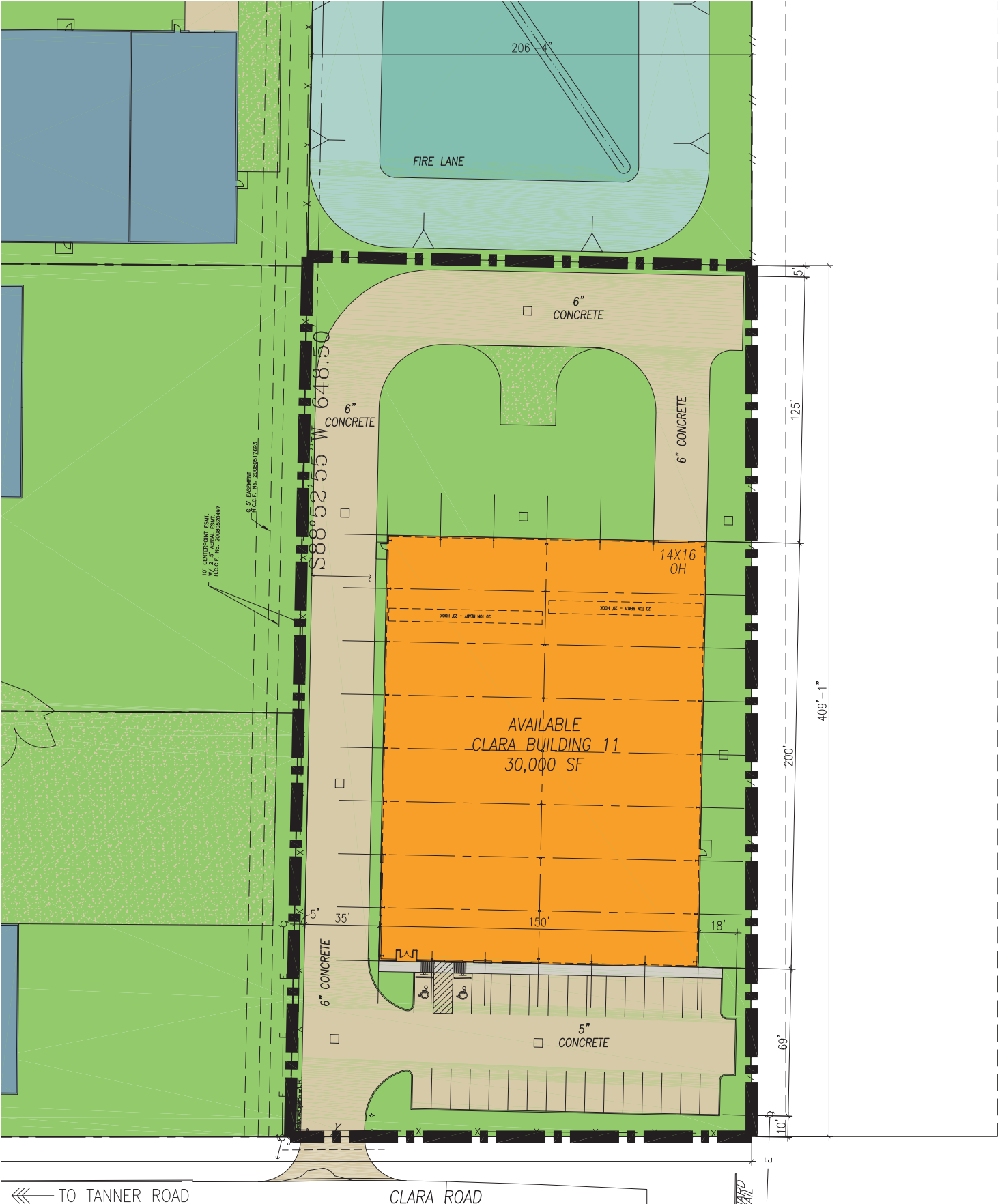


**AVAILABLE
CLARA BLDG 11
30,000 SF**

**5424 CLARA ROAD
HARRIS COUNTY, TX**



FOR LEASE OFFICE / WAREHOUSE



← TO TANNER ROAD

CLARA ROAD

CLARA BUILDING 11 HARRIS COUNTY, TX

