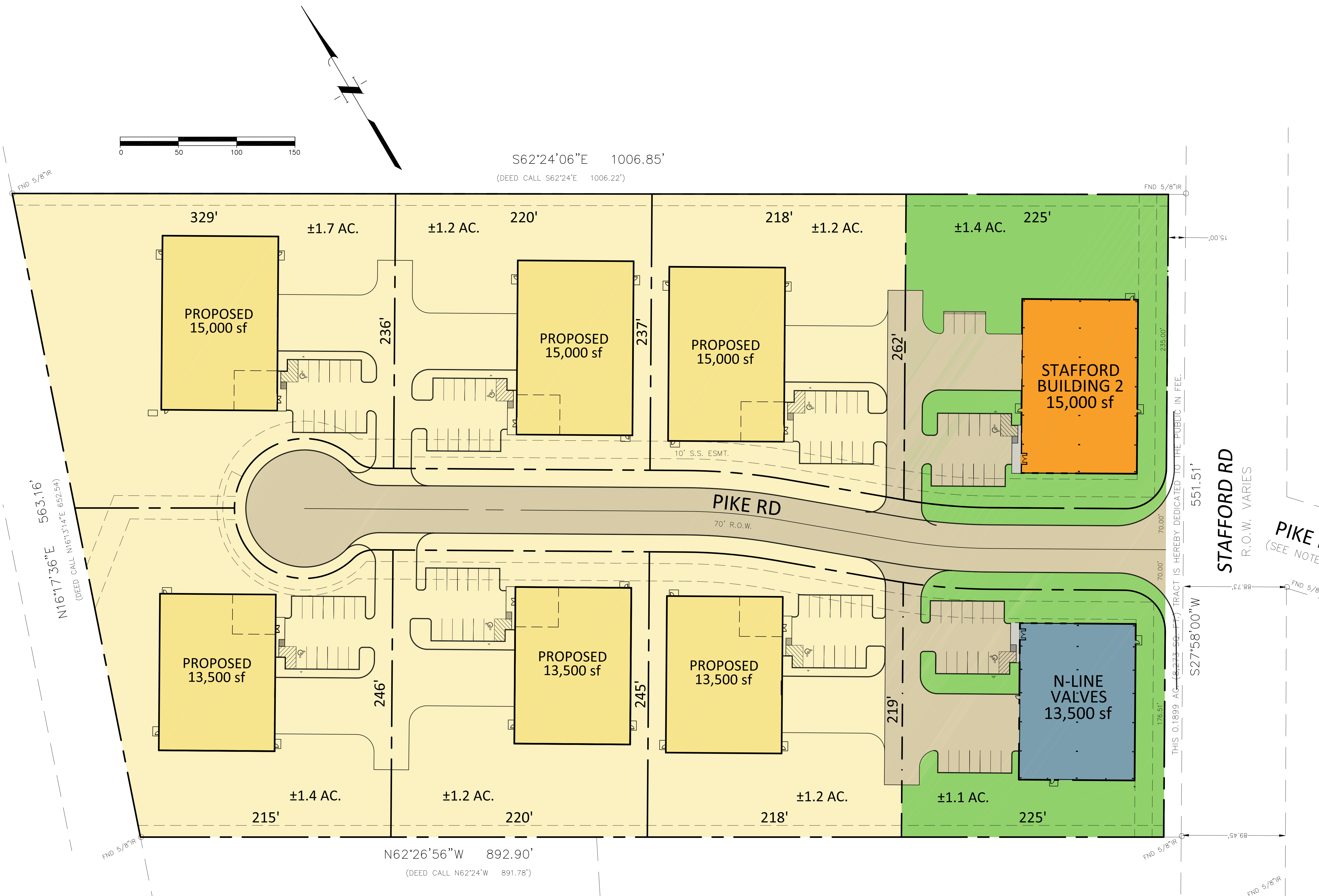
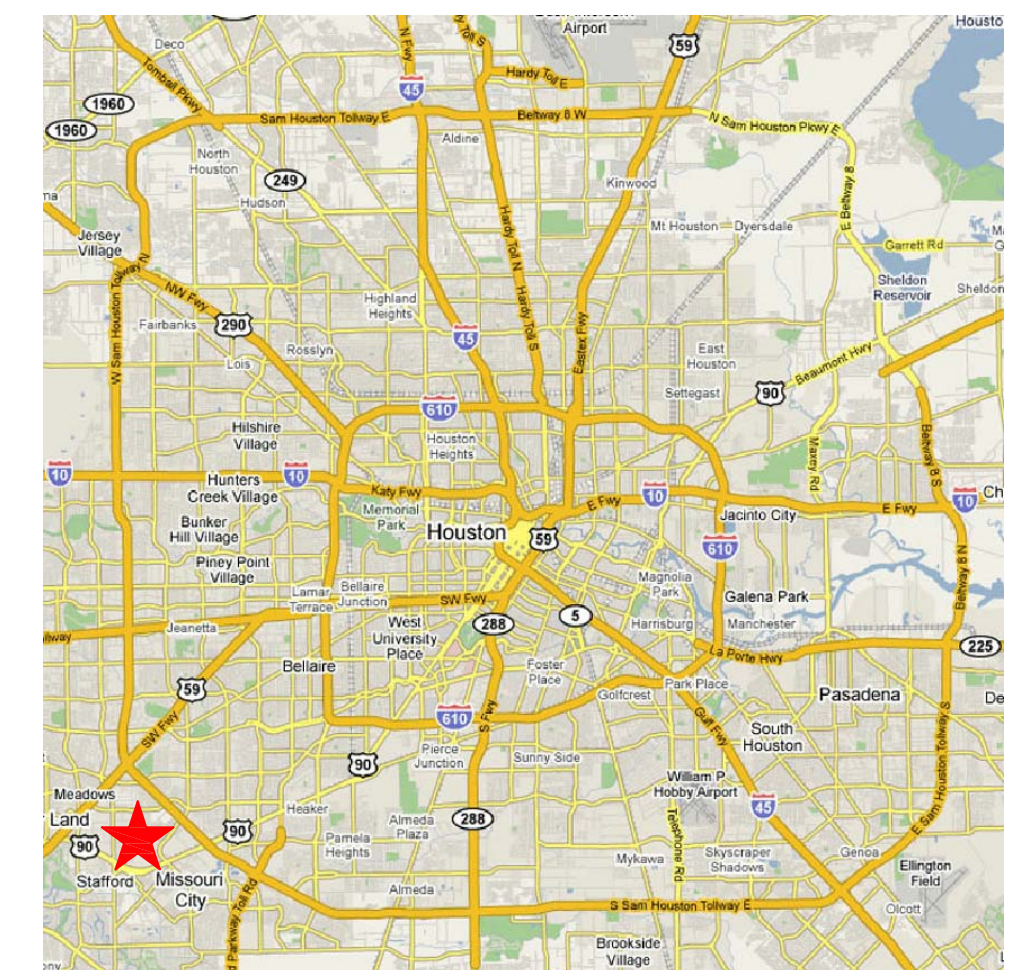
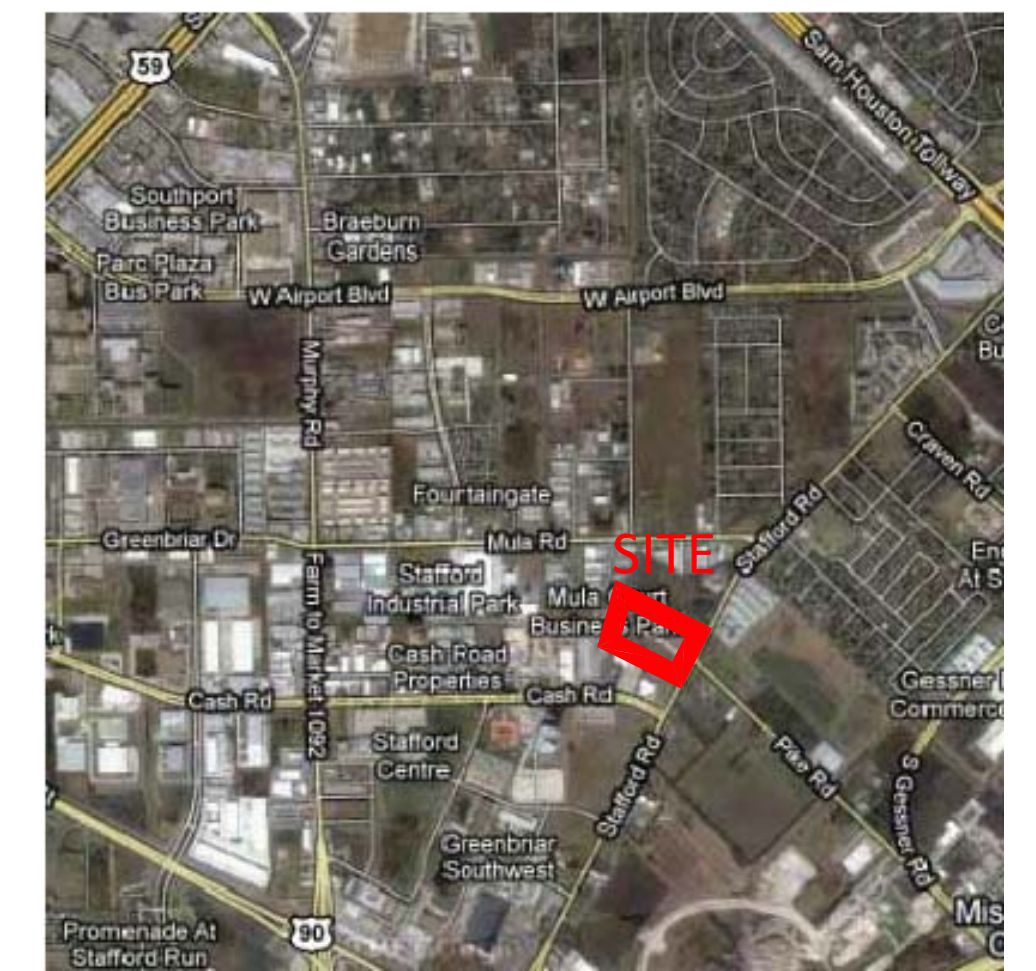


# STAFFORD BUSINESS PARK

±11.8 AC - STAFFORD, TEXAS



STAFFORD RD  
R.O.W. VARIES  
PIKE RD  
(SEE NOTE)

THIS 0.1899 AC (±0.273 ±0.477) TRACT IS HEREBY DEDICATED TO THE PUBLIC IN FEE.

- KEY**
- LEASE SPACE AVAILABLE
  - LAND AVAILABLE
  - PROPOSED BUILDING / LAND AVAILABLE
  - LEASED/SOLD BUILDING

**SITE PLAN**  
Apr 24, 2012

**CLAY**  
DEVELOPMENT & CONSTRUCTION INC.  
COMMERCIAL DESIGN-BUILDERS

5599 SAN FELIPE, SUITE 1440  
HOUSTON, TX 77057  
PHONE (713)789-2529  
FAX (713)782-3755

NOTE: PROPOSED PARK SITE PLAN, SUBJECT TO CHANGE