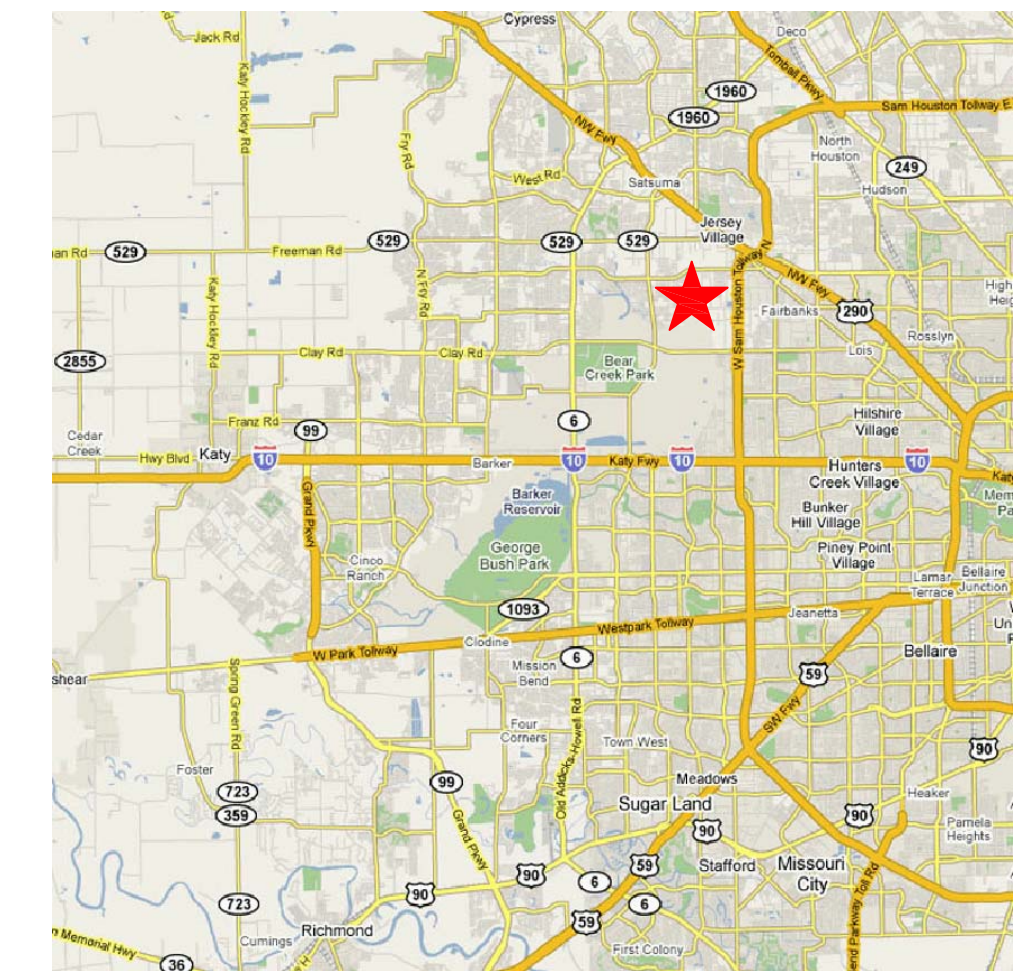
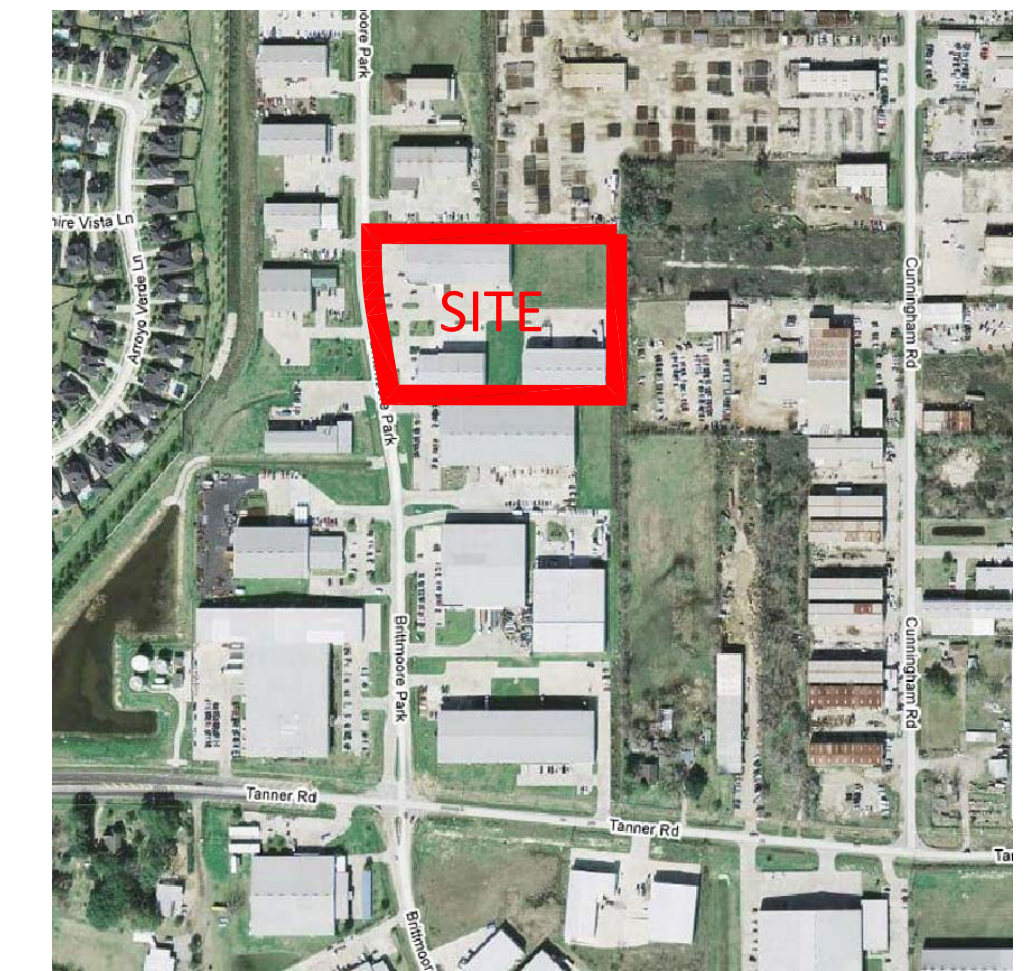


BRITTMOORE-TANNER BUSINESS PARK

HARRIS COUNTY, TEXAS
LAND ± 239,238 SQ. FT. ~ 5.5 AC.



KEY

- LEASE SPACE AVAILABLE
- LAND AVAILABLE
- PROPOSED BUILDING / LAND AVAILABLE
- LEASED/SOLD BUILDING

SITE PLAN



5599 SAN FELIPE, SUITE 1440
HOUSTON, TX 77057
PHONE (713) 789-2529
FAX (713) 782-3755

