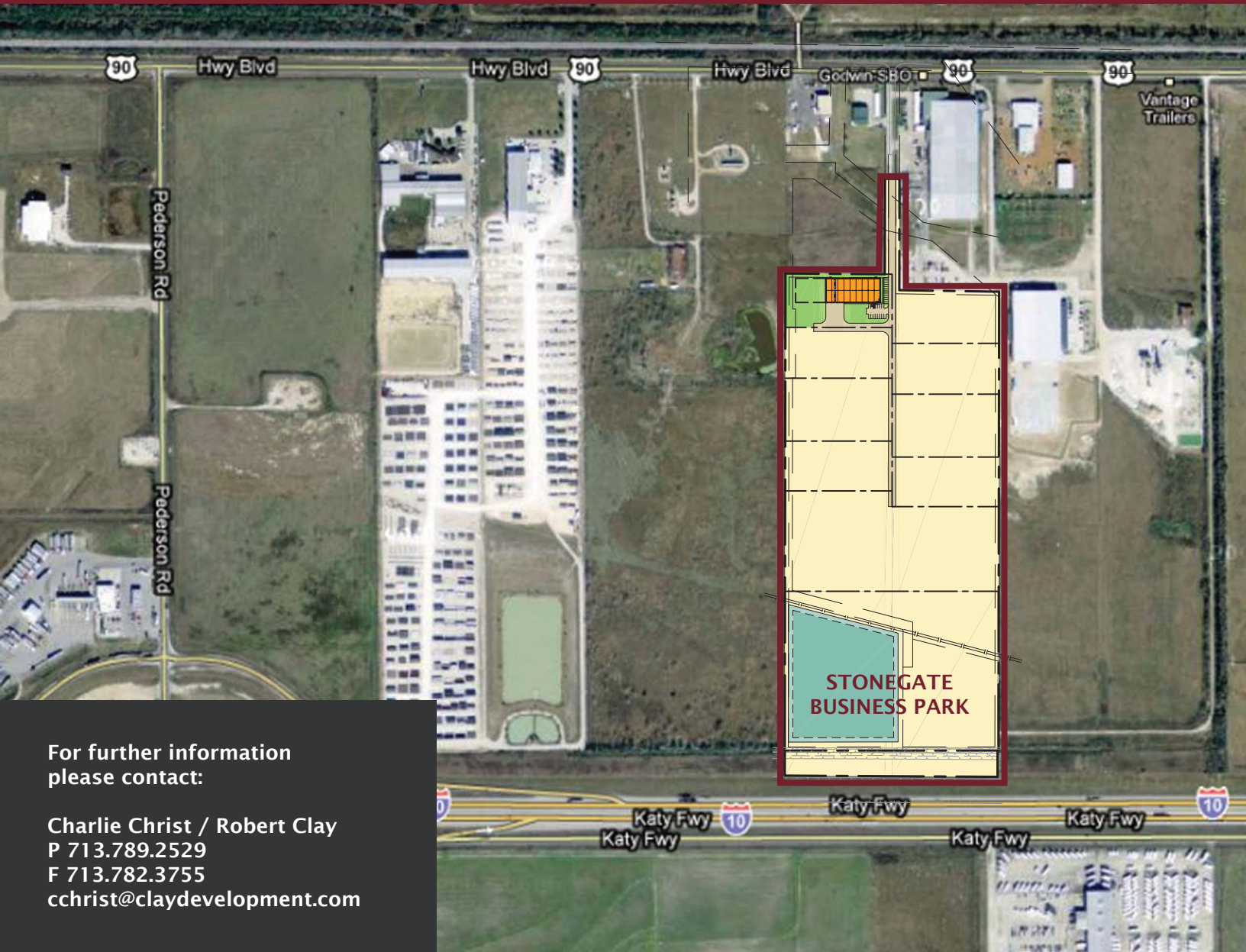
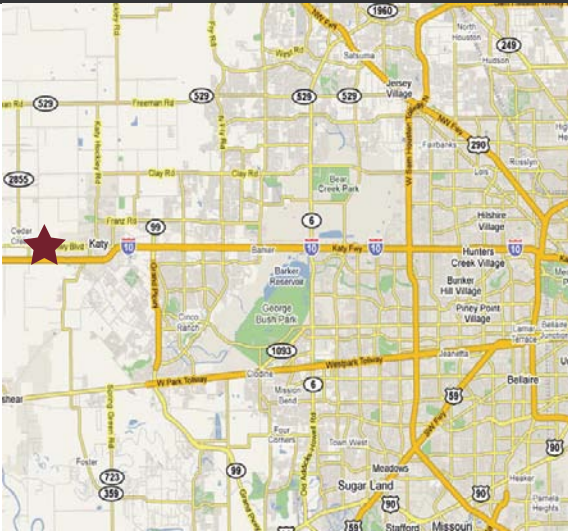


LAND AVAILABLE/ FOR SALE OR LEASE BUILD-TO-SUIT / DESIGN-BUILD



For further information
please contact:

Charlie Christ / Robert Clay
P 713.789.2529
F 713.782.3755
cchrist@claydevelopment.com



FEATURES

- 22,500 sf manufacturing space expandable to additional 12,500 sf .
- Up to 25 additional acres available for sale or BTS
- Located between Hwy 90 and I-10 at Pederson Road in West Houston
- Excellent access to Hwy 90 and I-10
- Regional detention provided
- Deed restricted park with professional management

CLAY
DEVELOPMENT & CONSTRUCTION INC.
COMMERCIAL DESIGN-BUILDERS

STONEGATE BUSINESS PARK WALLER COUNTY, TX

STONEGATE BUSINESS PARK

WALLER COUNTY, TEXAS
±49 ACRES



CLAY
DEVELOPMENT & CONSTRUCTION INC.
COMMERCIAL DESIGN-BUILDERS

5599 SAN FELIPE, SUITE 1440
HOUSTON, TX 77056
PHONE (713)789-2529
FAX (713)782-3755

- KEY**
- LEASE SPACE AVAILABLE
 - LAND AVAILABLE
 - PROPOSED BUILDING / LAND AVAILABLE
 - LEASED/SOLD BUILDING

NOTE: PROPOSED PARK SITE PLAN, SUBJECT TO CHANGE